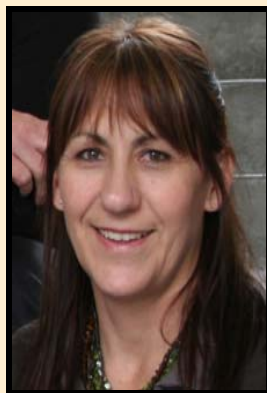




**CALLEJA Karla
GSAHS**

How do mothers in Goulburn who receive Government Assistance feed themselves and their families?



**CUMMING Melissa
GWAHS**

The Professional and Personal Impact on Primary Health Care Nurses in Rural and Remote Communities who are Required to Provide Palliative Care Services as a Component of their Generalist Role



**DALMAU Margaret
GSAHS**

Looking Beyond the Demographics: Identifying Factors Contributing to Suicide in the Over 65s in a Rural Region: A Thematic Analysis of Coroners Files 1999-2005



**DAVIES Lynn
NCAHS**

Seclusion Patterns Within a NSW (Australia) Rural Area Health Service



**DUNCOMBE Rohena
NCAHS**

A comparison of intake (and initial service delivery) strategies across a range of rural community health sites.

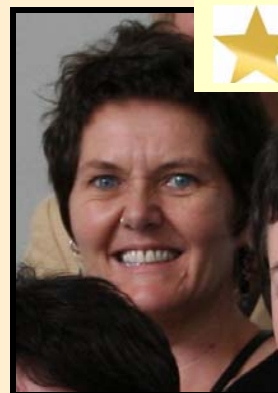


**FLAHERTY Rosa
NCAHS**

Does the 1-2-3 Magic Parenting Program result in carers reporting they are less stressed and more satisfied with their parenting role, when applied to the PANOC clinical population in rural Australia?

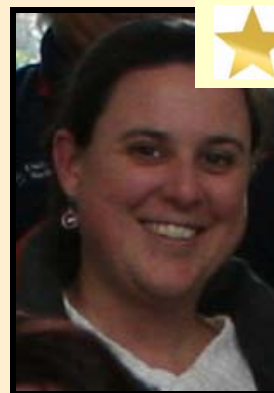


Final Report Completed



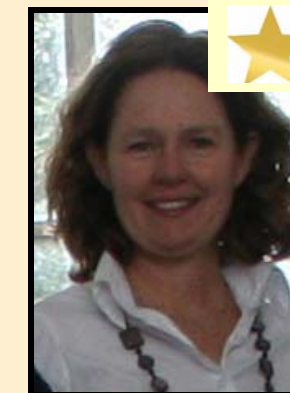
**FLINT Annie
GSAHS**

Women and Heart Disease - exploring rural women's experiences.



**GIUGNI Claudia
GWAHS**

A comparative study looking at the effectiveness of two different teaching methods used to improve the integration of the Palliative Care approach into Rural Residential Aged Care Facilities.



**HEWETSON Margaret
NCAHS**

The professional and personal support needs and career plans of rural and metropolitan hospital pharmacy graduates in NSW



**MACTAGGART Alison
GSAHS**

This project seeks to determine the extent, type and nature of partnerships that exist with local government in the GSAHS and to identify those partnerships that are likely to have a focus on improving the social determinants of health.



**SAUNDERS Karen
NCAHS**

Does the use of Pressure Sore Prediction Score (PSPS) prompt nurses to initiate preventative measures?



**SCHWEBEL Debbie
NCAHS**

To explore how the Nurse Executive in small rural hospital integrates internal and external forces in the provision of service delivery.



**SCROOPE Lesley
GSAHS**

Effective approaches to determining and implementing a physical activity program for the Indigenous women in the Yass Valley Shire.



**STANFORD Christine
NCAHS**

What are the needs (met and unmet) of patients diagnosed with a primary lung cancer in the Coffs Harbour, Bellingen and Nambucca regions of the North Coast Area Health Service?



**WILSON Rhonda
HNEAHS**

Delivering early psychosis mental health services to young people in rural communities: finding the young people and developing service models which resonate with them.



**WRIGHT Leanne
NCAHS**

Do Aboriginal people leave the Emergency Department following triage prior to being seen by the medical officer in the NCAHS more frequently than non-Aboriginal people?